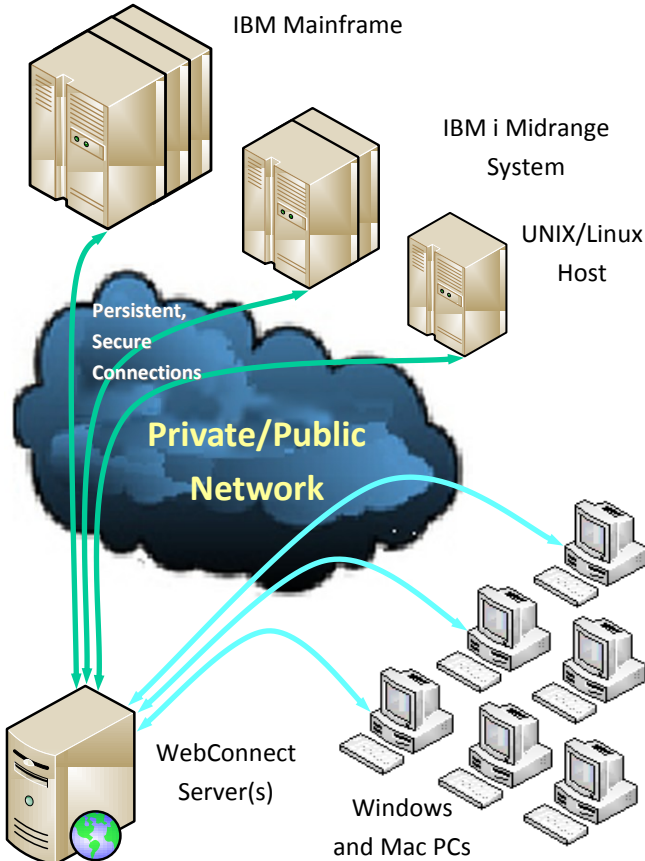


### WebConnect Deployment Examples\*



\* Showing basic emulation and configuration options only. Contact OC for more details on WebConnect's robust features and connectivity options.

### Robust, Low Cost Terminal Emulation

- ✓ Web based, server side emulation
- ✓ Full feature set, all commonly used models
- ✓ Pooled network licenses, not named users
- ✓ Secure, persistent host connections

### Additional Thin Client Emulation Capabilities

- ✓ Less support via centralized install, admin
- ✓ Automatic macro conversion
- ✓ Scales to tens of thousands connections

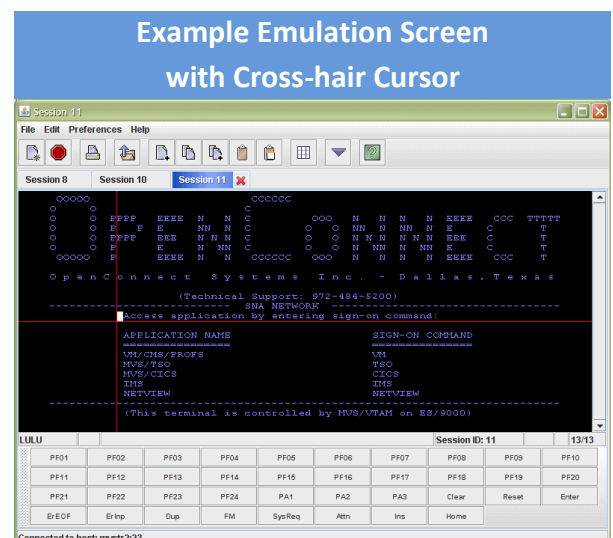
Since 1982, OpenConnect Systems has led the market in mainframe connectivity with high end TCP/IP-to-SNA gateways and host-to-web-to-PC products such as WebConnect, the premiere, thin client solution for connecting to IBM mainframes, midrange systems and UNIX/Linux hosts.

WebConnect is mature, highly scalable, secure and full featured with enough functionality to support the heads-down production professional as well as the ease of use for casual PC users who want load and go connectivity for occasional mainframe access with a low learning curve.

The world's largest enterprises and federal, state and local governments depend on WebConnect to support 30,000 users or more on their business-critical applications, with the same functionality as a PC-based fat client.

WebConnect enables large and small IT shops to move off fat client emulation on PCs, to server-side, web-based solutions, on the widest choice of platforms in the industry. WebConnect runs on all the popular servers. See the reverse of this data sheet for a summary of features and supported platforms).

Call OC at (972) 888-0480 or e-mail us at [tc@oc.com](mailto:tc@oc.com), to learn more. Or to begin your no obligation, no cost 30 day trial of OC's WebConnect, point your browser to our web site at: <http://www.oc.com/legacymodernization/wcbenefits.jsp> and click Trial.



### Feature/Functionality Highlights

#### WebConnect Server Platforms

Mainframe SuSE Linux 390 V10.0 SP2  
RISC AIX 5.2 or later, HP-UX 11.11 or later, Solaris 2.8+  
X86 RHEL 3 or later. RH 6 or later and equivalent CENTOS versions, Windows 2000 SP2 or later

#### Client Platforms

Windows NT 4+ on x86  
MAC OS X+

#### Terminal Emulation Client Specs

HTML Browser with CSS or layers (e.g. IE 6.0+, Firefox, Safari 1.0.2+)  
IE8 Java Swing WebConnect certified browser with Java 1.5+ (e.g. IE 8, Mozilla based browsers-Firefox)  
.NET .NET Framework 2.0, J#2.0 Redistributable Package, .NET Security Policy, IE 6/7+  
Classic Applet Netscape Navigator Version 7.0+ w/ JRE 1.4.1+  
MSIE 5.0.1+ with JVM Build 3802+  
SUN JRE 1.4.1+ Java 1.5  
Safari 1.0.2 & 1.2 w/ JDK 1.4.2

#### Terminal Emulation Specs

##### Display Models

3270 Models 2—5 (24 rows x 80 columns up to 43 rows x 80 columns and 27 rows x 132 columns)  
3287, 3812 Printers  
5250 Models 1 & 11  
VT—configurable via TELNET negotiation, typically VT 220, SSH support- data encryption

#### Security

Client-Server encryption—SSL, up to 2048 key length, RSA RC4 128 bit key  
Strong password, password history, password similarity rules

#### Programming/Automation

Automatic macro conversion, EHLLAPI Programming, JHLLAPI Programming, VB Scripting, IND\$FILE scheduling

#### End User Feature Highlights

PF/PA/ATTN key click pad+keyboard shortcuts, key mapping, macro tools and controls, session grouping/configuration, copy/paste configuration, print emulation controls, multiple file transfer controls, hot spot definition, color mapping, type ahead, cursor customization